

4

BED

Immaculate and Versatile Accommodation

24, Victoria Avenue, Peacehaven, BN10 8LX

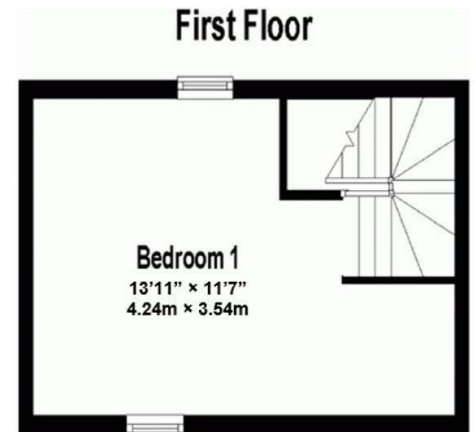
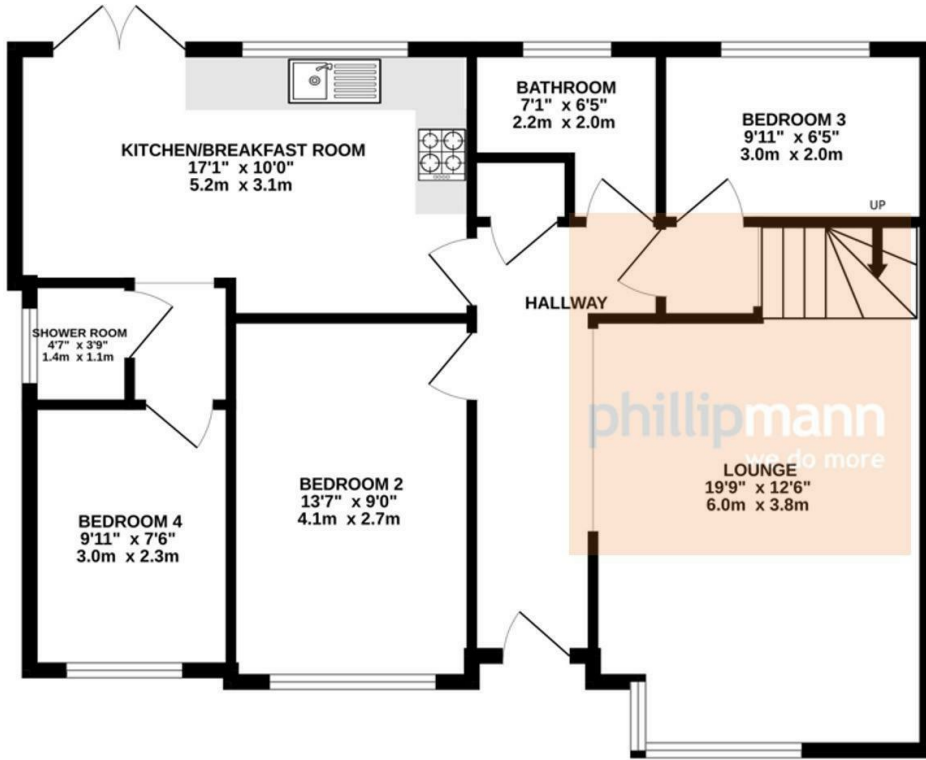


Offers Over £400,000

Freehold

phillipmann
we do more

www.phillipmann.com



inbrief...

Situated in a highly desirable position south of the South Coast Road, this spacious and versatile semi detached property is perfectly placed for enjoying Peacehaven's stunning cliff-top walks, nearby beach access and a wide range of local amenities. Offering flexible accommodation across two floors with its loft conversion, the property is ideal for growing families, multi-generational living or those seeking additional space to work from home.

The accommodation is arranged to provide both comfort and practicality. Upon entering, a welcoming entrance hall leads to the generous lounge, a bright and inviting space perfect for relaxing or entertaining. The modern kitchen/dining room is thoughtfully designed with ample storage and workspace. Direct access to the rear garden from the dining area further enhances the appeal, allowing for seamless indoor-outdoor living during the warmer months.

The ground floor offers exceptional flexibility with three bedrooms, which could alternatively be utilised as additional reception rooms, a home office or hobby room depending on individual requirements. A contemporary shower room ensuite and separate family bathroom serve this floor, providing convenience for busy households. Occupying the first floor is the principal bedroom featuring eaves storage providing useful additional space and further practicality.

Externally, the property boasts a beautifully landscaped rear garden, providing an ideal setting for relaxation, entertaining and family enjoyment. A generous decked terrace offers the perfect space for outdoor dining and social gatherings whilst also featuring a large lawn covering and storage sheds. To the front, a private driveway provides valuable off-road parking.

VIEWINGS ADVISED



EPC - D

Council Tax Band - C

moreinfo...



Phillip Mann Peacehaven Office
226-230 South Coast Road, Peacehaven, BN10 8JR
01273 586622

To see more details on this & all our homes go to
www.phillipmann.com